



Placement

Brochure

2024-2025

ABOUT BITS PILANI

For **60 years**, BITS Pilani has been a revered institution, renowned for its commitment to academic excellence and fostering innovation. Since its establishment in 1964, the institute has consistently propelled the boundaries of knowledge through research and development, producing graduates who excel in their fields and contribute to society's advancement.

With a focus on **practical application** and a **collaborative learning environment**, BITS Pilani has nurtured a spirit of entrepreneurship among students, leading to the creation of impactful startups and industry leaders. Its **strong industry connections** and emphasis on **industry-driven projects** have enabled students to gain practical exposure and develop the skills necessary for success in a competitive world.

BITS Pilani continues to stand as a confident and influential institution, shaping the leaders of tomorrow and making a lasting impact on the global higher education landscape.



In Top 8 :
India

2022 QS Grad
Employability

33
Degrees
Offered

ABOUT DEGREE PROGRAMS

The Degree programs, encompassing both First Degree and Higher Degree, offer an immersive professional journey, enhancing specialized skills and expanding knowledge across Engineering, Pharmacy, and interdisciplinary spheres. These programs are based on the total number of units a student needs to complete, rather than time.

First Degree students have a standard duration of **eight semesters**, including **two Practice School** experiences: a two-month program after the fourth semester and a six-month program later on. They can also pursue **Minor Programmes** in areas such as Finance, Data Science, Computational Economics, Entrepreneurship, Supply Chain Analytics, Physics, Management, Material Science and Engineering, Film and Media, and Water and Sanitation.

Higher Degree students typically complete their programs in **four semesters**, with the final semester devoted to either **Dissertation** or **Practice School**. There is an option for a three-semester completion by starting dissertation work in the first semester. The Practice School is a six-month industry hands-on program integral to both Higher and First Degree programs.

BITS Pilani uses a **7-point grading system** for all degrees, with a 1-point difference between each successive grade. The lowest grade point is 2, and the highest is 10, leading to an **average grade point of 6**.



PREVIOUS SEASON HIGHLIGHTS

International Offers

Tower Research Capital once again hired for its **Quant Intern** role based in London with a stipend of **INR 26 Lakhs/month**.

Startup Hiring Week

Over **40 startups** participated in the inaugural startup hiring week, marking a significant engagement with entrepreneurial ventures.

Consulting

The **Bruce Henderson Case competition** facilitated BCG hiring, resulting in 2 students securing positions through this avenue, alongside the regular hiring process.

SI Opportunities

200+ Students secured Summer Internships across diverse domains with participation from top firms and institutions, offering a wide range of opportunities.

Supply Chain

HUL and **Mondelez** actively participated in campus hiring alongside the recognition of BITS Pilani as one of the top 5 institutions eligible for the **P&G Spotlight program**.

Quant

Companies such as **Trexquant**, **Millennium Management**, and **IMC Trading** demonstrated the campus's flourishing quant culture through their hiring last placement season.

STUDENT HIGHLIGHTS

Non - Core



LEADERSHIP

Students overlook high-stake activities such as Placements and Internships of **4000+** students, Student Mess facilities with funds of **16 Crores** and student run-fests having budgets upto Rs. **3 Cr.** with **7000+** footfall annually

ENTREPRENEURSHIP

PIEDS has nurtured **1,600+** startups, with **13 unicorns** and **1 decacorn**, raising more than **\$18B**. Conquest, India's first student-run startup accelerator since 2005, offers over **1 crore** in equity-less grants, mentorship, and **100+** partnerships yearly.

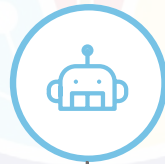


CONSULTING & ANALYTICS

3 students topped StratQuest - strategy case competition at IIM Bangalore, defeating **183** teams. **180 DC**, IFSA, ShARE chapters of the BITS Pilani campus partner with companies in domains related to consulting, business analysis and analytics.



Core



CUTTING EDGE INNOVATION

EEE, IKRG, AICHe, Team Anant, Sally Robotics, and Team BITS amongst others continuously work towards fostering innovation in the fields of core electrical, mechanical, and chemical engineering.

ROVER DESIGN

Criss Robotics excelled at IRC 2024 - Best Business Plan Award and ranked **10th** among **1200+** participants, achieved **5th** place worldwide and **2nd** in Asia at the European Rover Challenge. IKRG secured **1st** place globally in Project Review in NASA HERC 2023 and are currently crafting a fully electric go-kart for the 2024 ISIE Indian Karting Race.



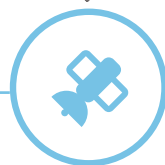
SUSTAINABLE ENGINEERING

Team BITS Pilani is the **first** Indian student team to have created a **100% Ethanol-fueled** car in India. They have previously bagged **1st** place in India and **4th** place globally in the "Pitch the Future" event of Shell Eco Marathon-2021 (Global).



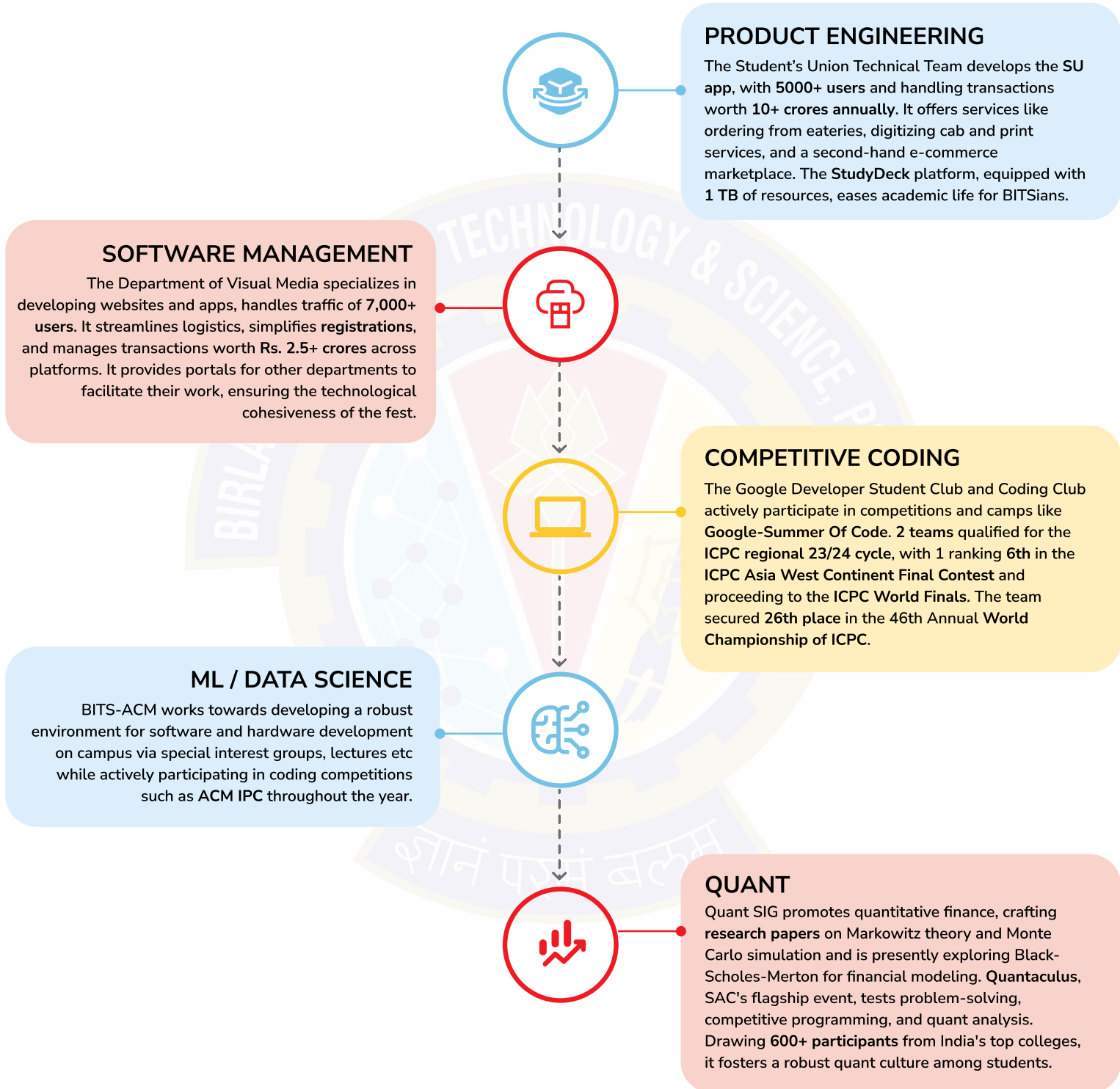
SATELLITE DEVELOPMENT

Team Anant is currently working towards developing BITS Pilani's first Nanosatellite designed according to **3U CalPoly** standards, under the guidance of the Institute and the Indian Space Research Organisation.



STUDENT HIGHLIGHTS

IT



ACADEMIC PROGRAMMES

Programmes offered at BITS Pilani - Pilani Campus

INTEGRATED FIRST DEGREE PROGRAMMES

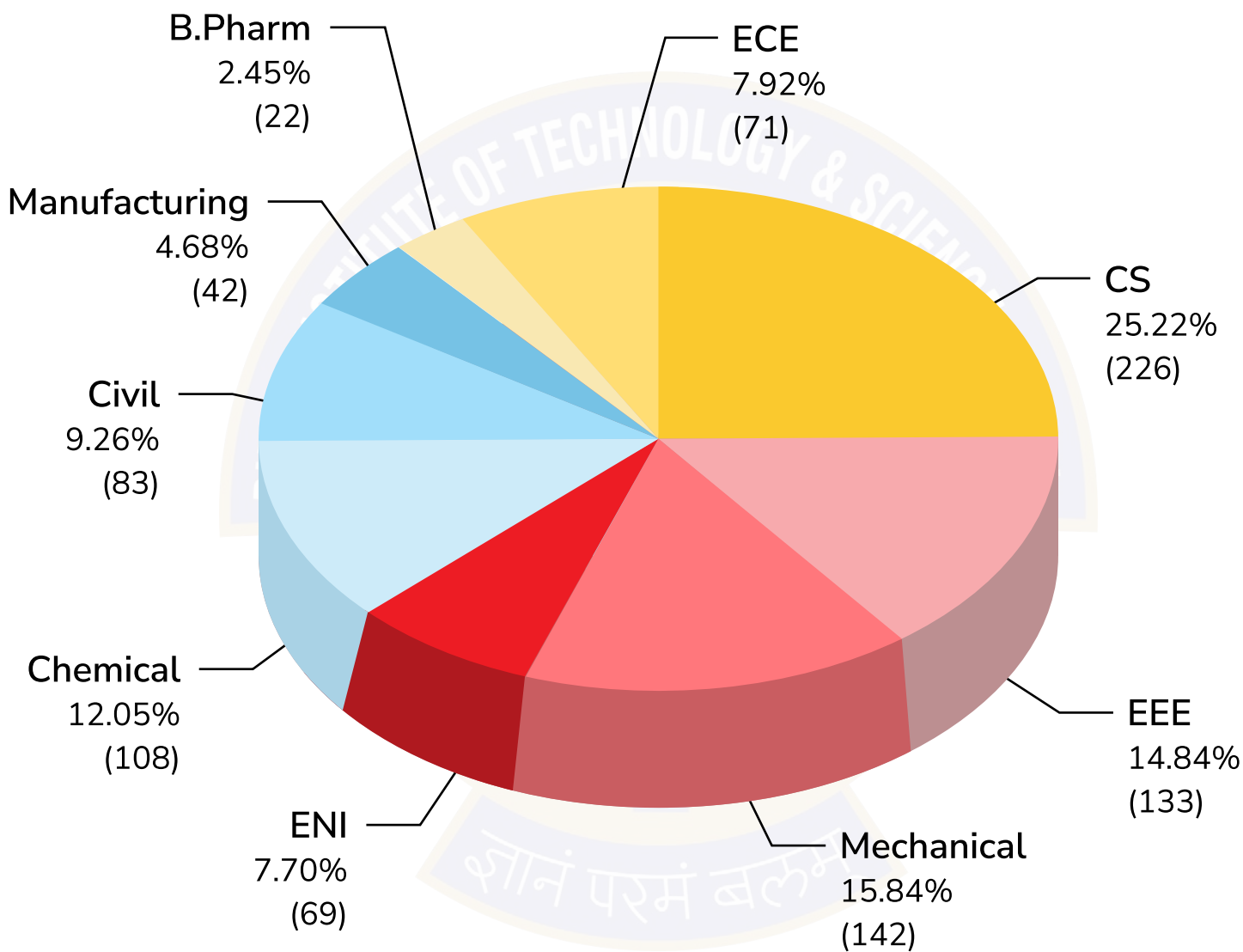
- B.E. Chemical Engineering
- B.E. Civil Engineering
- B.E. Computer Science
- B.E. Electrical and Electronics Engineering
- B.E. Electronics and Communication Engineering
- B.E. Electronics and Instrumentation Engineering
- B.E. Mechanical Engineering
- B.E. Manufacturing Engineering
- B. Pharmacy
- M.Sc. Biological Sciences
- M.Sc. Chemistry
- M.Sc. Economics
- M.Sc. Mathematics
- M.Sc. Physics
- M.Sc. General Studies

- M.E. Biotechnology
- M.E. Chemical
- M.E. Infrastructure Engineering and Management
- M.E. Structural Engineering
- M.E. Transportation Engineering
- M.E. Computer Science
- M.E. Design Engineering
- M.E. Communication Engineering
- M.E. Embedded Systems
- M.E. Microelectronics
- M.E. Environmental Engineering
- M.E. Mechanical
- M.E. Manufacturing Systems Engineering
- M.E. Software Systems
- M.Pharm Pharmaceutical Chemistry
- M.Pharm Pharmaceutics
- M.Pharm Pharmacology
- M.B.A Business Analytics

INTEGRATED HIGHER DEGREE PROGRAMMES

BATCH DEMOGRAPHICS

Undergraduate Students



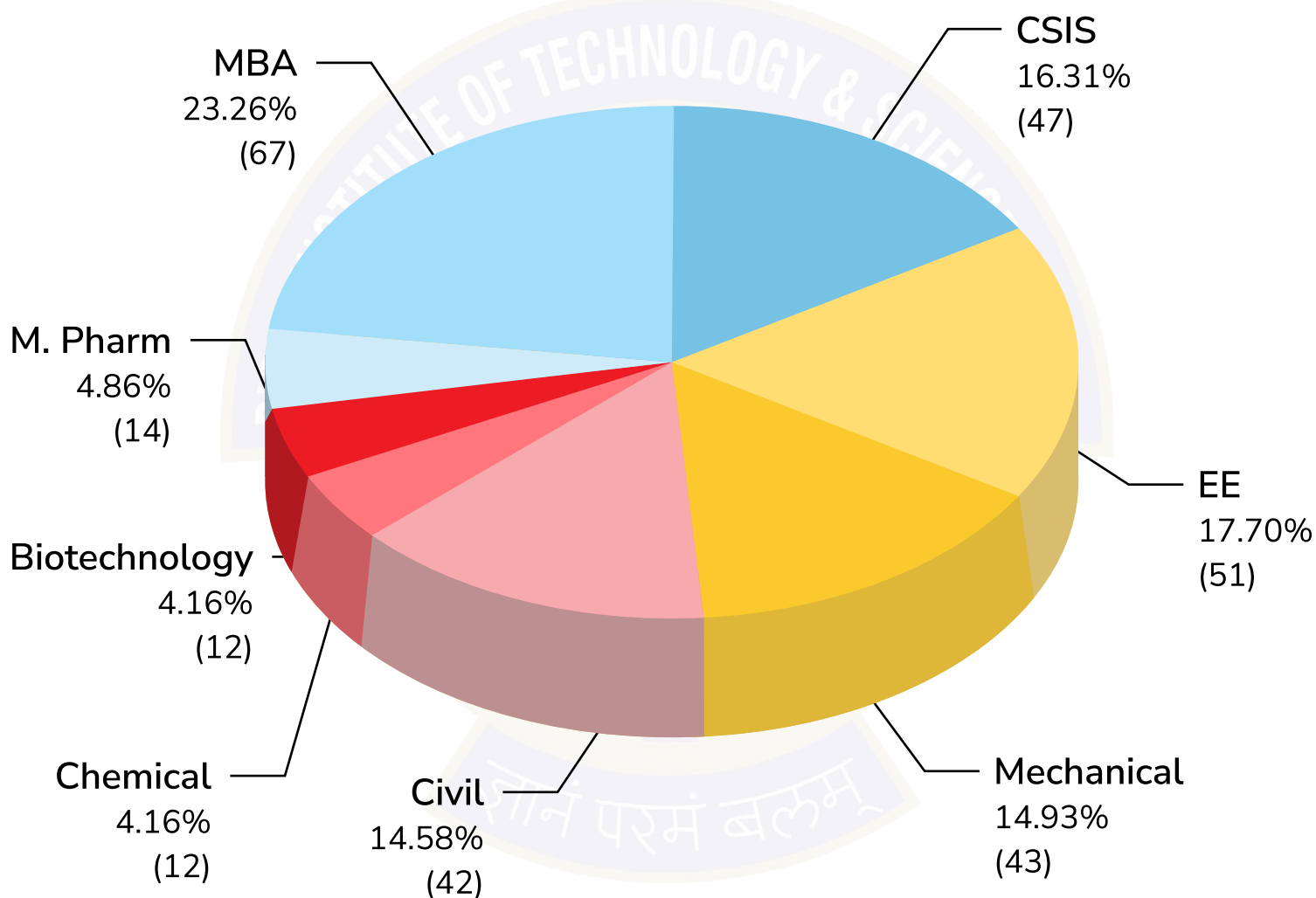
Gender Ratio

Male ♂
85.66% (789)

Female ♀
14.24% (132)

BATCH DEMOGRAPHICS

Postgraduate Students



Gender Ratio

Male ♂
75% (216)

Female ♀
25% (72)

PAST RECRUITERS



Mercedes-Benz



PLACEMENT PROCESS



ENGAGEMENT

Initiate contact with the company to confirm their participation in the placement program.



FILLING OF JAF

The company completes the Job Announcement Form (JAF), detailing job roles, qualifications, compensation packages, and other recruitment specifics, ensuring all requirements are clear and documented.



SCHEDULING

An SPOC from our Placement Unit will coordinate with the company to discuss and finalize the schedule and logistics for all recruitment activities, ensuring a smooth process.



INTERVIEW

The company conducts their hiring process either on campus or virtually, with our support in organizing interviews and assessments.

ALUMNI



SRIHARSHA MAJETY
Co-founder and CEO of Swiggy

RICHA KAR
Co-founder of Zivame



HARI MENON
CEO and Co-Founder of Bigbasket

SABEER BHATIA
Co-founder of Hotmail



REVATHI ADVAITHI
CEO of Flextronics

ABHINAV ASTHANA
Founder and CEO of Postman



ISHAN BANSAL
Co-founder of Groww

BABA KALYANI
Chairman of Bharat Forge



SANJAY MEHROTRA
President and co-founder of Sandisk

S.P. KOTHARI
Padma Shri Awardee, Dean of MIT Solan School of Management



PLACEMENT MANAGERS



**Mr. Tabir Mishra -
Senior Manager, Placements**

+91 8107677009

tabir.mishra@pilani.bits-pilani.ac.in

**Mr. Vipul Singhal
Deputy Manager, Placements**
+91 8447243211
vipul.singhal@pilani.bits-pilani.ac.in

